

WAAS CH 86815 W27A	APP CRS 271°	Rwy Idg TDZE Apt Elev	5000 529 529
--	------------------------	-----------------------------	---

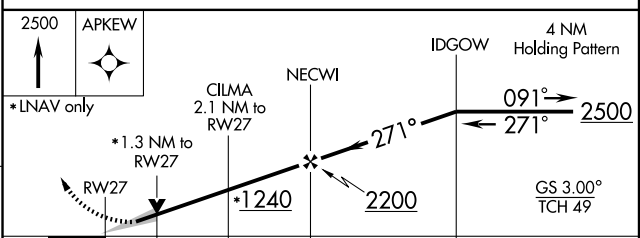
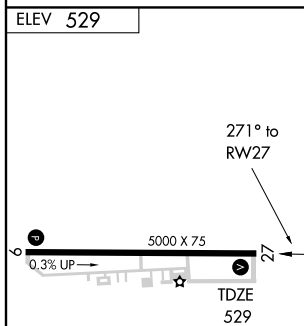
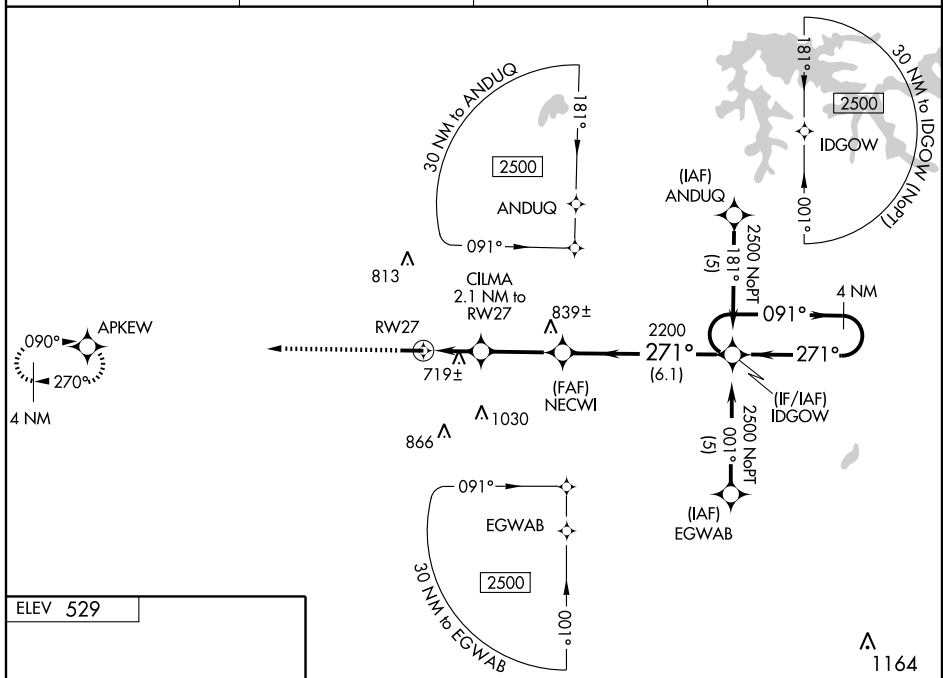
RNAV (GPS) RWY 27

HUNTINGBURG (HNB)

⚠ For uncompensated Baro-VNAV systems, LNAV/VNAV NA below -16°C (4°F) or above 47°C (116°F). DME/DME RNP-0.3 NA.
⚠ VDP and Baro-VNAV NA when using Evansville altimeter setting. When local altimeter setting not received, use Evansville altimeter setting and increase all DA 85 feet and all MDA 100 feet, increase LPV and LNAV/VNAV all Cats and LNAV Cats C and D visibility ¼ mile.

MISSED APPROACH: Climb to 2500 direct APKEW and hold.

AWOS-3 118.250	EVANSVILLE APP CON ★ 126.4 226.4	CLNC DEL 118.8	UNICOM 122.8 (CTAF) 📻
--------------------------	--	--------------------------	--



CATEGORY	A	B	C	D
LPV DA		812-1	283 (300-1)	
LNAV/VNAV DA		1038-1¾		509 (600-1¾)
LNAV MDA	980-1	451 (500-1)	980-1¼ 451 (500-1¼)	980-1½ 451 (500-1½)
CIRCLING	1000-1 471 (500-1)	1020-1 491 (500-1)	1020-1½ 491 (500-1½)	1080-2 551 (600-2)

EC-2, 01 JUL 2010 to 29 JUL 2010

EC-2, 01 JUL 2010 to 29 JUL 2010