

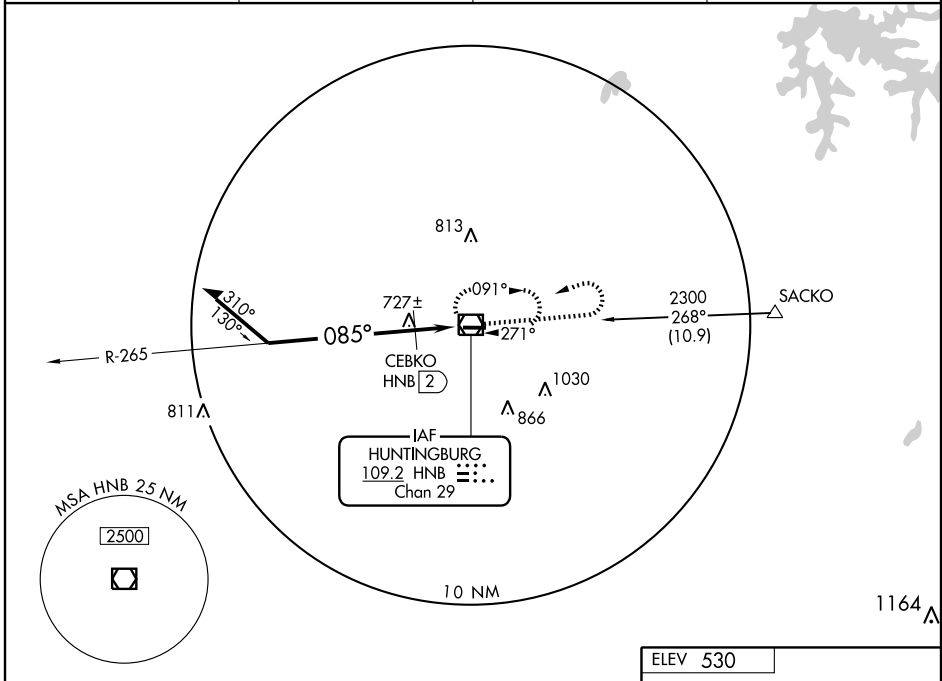
VOR/DME HNB 109.2 Chan 29	APP CRS 085°	Rwy Idg TDZE Apt Elev 5000 525 530
---	------------------------	--

VOR RWY 9

HUNTINGBURG (HNB)

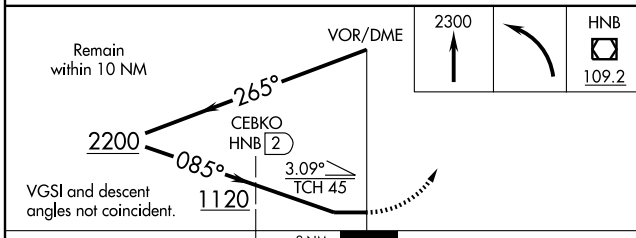
<p>▼ ▲ NA</p>	<p>MISSED APPROACH: Climb to 2300 then left turn direct HNB VOR/DME and hold.</p>		
-------------------	---	--	--

<p>AWOS-3 118.250</p>	<p>EVANSVILLE APP CON * 126.4 226.4</p>	<p>CLNC DEL 118.8</p>	<p>UNICOM 122.8 (CTAF) 0</p>
----------------------------------	--	----------------------------------	--



EC-2, 01 JUL 2010 to 29 JUL 2010

EC-2, 01 JUL 2010 to 29 JUL 2010



ELEV 530

VOR/DME HNB 109.2

085° to VOR/DME

0.3% UP

5000 X 75

27

TDZE	525
MIRL Rwy 9-27	0
REIL Rwys 9 and 27	0

Knots	60	90	120	150	180
Min:Sec					

CATEGORY	A	B	C	D
S-9	1120-1	595 (600-1)	1120-1½ 595 (600-1½)	1120-1¾ 595 (600-1¾)
CIRCLING	1120-1	590 (600-1)	1120-1½ 590 (600-1½)	1120-2 590 (600-2)
CEBKO DME MINIMUMS				
S-9	980-1	455 (500-1)	980-1¼ 455 (500-1¼)	980-1½ 455 (500-1½)
CIRCLING	980-1 450 (500-1)	1020-1 490 (500-1)	1020-1½ 490 (500-1½)	1080-2 550 (600-2)