

WAAS CH 49207 W09A	APP CRS 091°	Rwy Idg TDZE Apt Elev	5000 524 529
----------------------------------------	------------------------	-----------------------------	-----------------------------------------

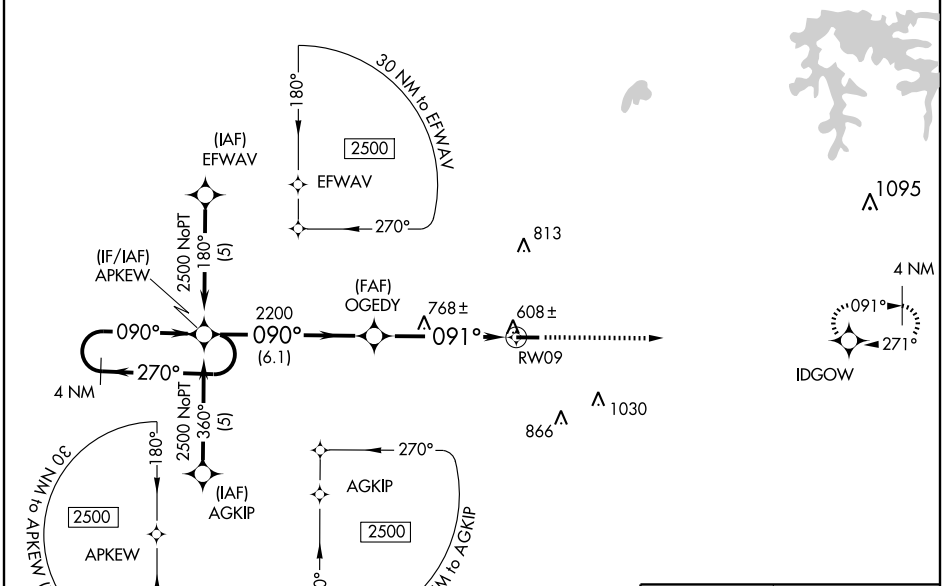
RNAV (GPS) RWY 9

HUNTINGBURG (HNB)

⚠ For uncompensated Baro-VNAV systems, LNAV/VNAV NA below -16°C (4°F) or above 47°C (116°F). DME/DME RNP-0.3 NA. Visibility reduction by helicopters NA.
⚠ Baro-VNAV NA when using Evansville altimeter setting.
 When local altimeter setting not received, use Evansville altimeter setting and increase all DA 85 feet and all MDA 100 feet, increase LPV and LNAV/VNAV all Cats, and LNAV Cats C and D visibility ¼ mile.

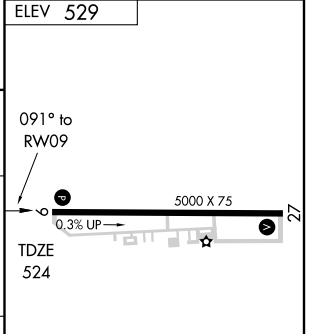
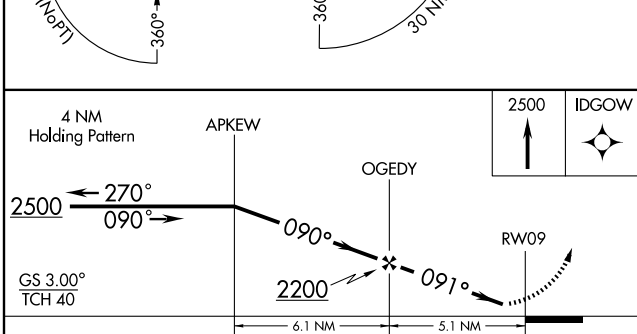
MISSED APPROACH: Climb to 2500 direct IDGOW and hold.

AWOS-3 118.250	EVANSVILLE APP CON* 126.4 226.4	CLNC DEL 118.8	UNICOM 122.8 (CTAF) 📻
--------------------------	-------------------------------------------	--------------------------	----------------------------------------



EC-2, 01 JUL 2010 to 29 JUL 2010

EC-2, 01 JUL 2010 to 29 JUL 2010



CATEGORY	A	B	C	D
LPV DA		845-1¼	321 (400-1¼)	
LNAV/VNAV DA		878-1¼	354 (400-1¼)	
LNAV MDA	1020-1	496 (500-1)	1020-1¼ 496 (500-1¼)	1020-1½ 496 (500-1½)
CIRCLING	1020-1	491 (500-1)	1020-1½ 491 (500-1½)	1080-2 551 (600-2)

MIRL Rwy 9-27 **📻**
 REIL Rwy 9 and 27 **📻**